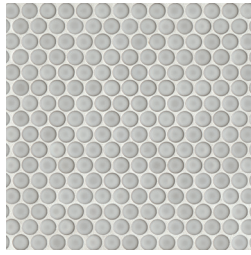


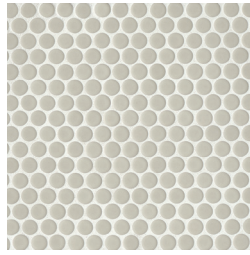
3/4" Penny Rounds Mosaic - Gloss (12"x12" Sheet)



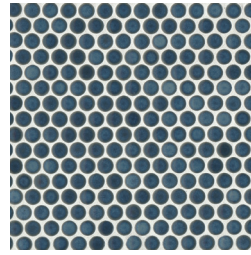
White - WHI
DEC360WHI34G



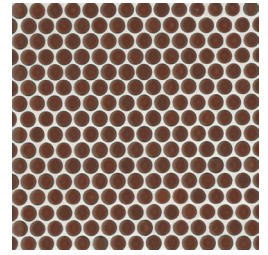
Dove Grey - DOG
DEC360DOG34G



Off White - OFW
DEC360OFW34G

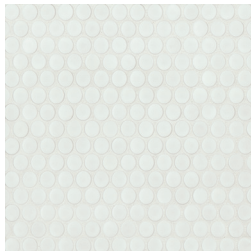


Lagoon - LAG
DEC360LAG34G

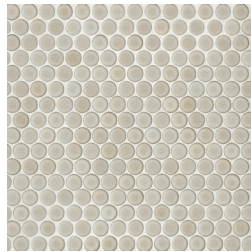


Cardinal - CAR
DEC360CAR34G

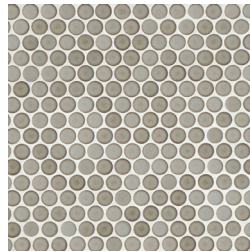
3/4" Penny Rounds Mosaic - Matte (12"x12" Sheet)



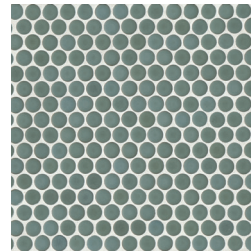
White - WHI
DEC360WHI34M



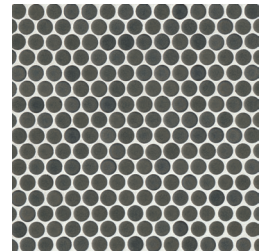
Beige - BEI
DEC360BEI34M



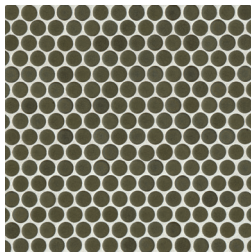
Pumice - PUM
DEC360PUM34M



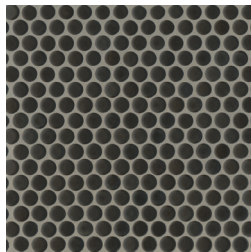
Silver Sage - SIS
DEC360SIS34M



Iron - IRO
DEC360IRO34M



Shale - SHA
DEC360SHA34M



Charcoal - CHA
DEC360CHA34M





360

Decorative (Glazed Porcelain)

Photo Features 3/4" Penny Rounds Mosaic in White Matte & Pumice Matte.

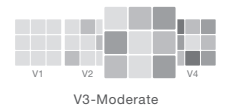
SIZING & PACKAGING

Type	Shape	Item Code	Size	Description	Pcs / Ctn	Sf / Ctn
Mosaic		DEC360***34G	12"x12" Sheet	3/4" Penny Rounds Mosaic - Gloss	10	10.00
		DEC360***34M	12"x12" Sheet	3/4" Penny Rounds Mosaic - Matte	10	10.00

ANSI TECHNICAL SPECIFICATIONS

	DCOF Acutest	Scratch Resistance MOHS	Breaking Strength ASTM# C648	Water Absorption ASTM# C373	Chemical Resistance ASTM# C650	Bond Strength A137.2-7.7	Thermal Shock ASTM# C484
Results	N/A	7	≥ 250 lbf	≤ 0.5%	Unaffected	Pass	N/A

Shade Variation



APPLICATIONS

	Floors	Walls	Countertops	Shower Floors (Matte Only)	Shower Walls	Pools/Spas
Residential	•	◻	◻	•	◻	◻
Commercial		◻	◻		◻	◻



LEGEND

- ◻ Product rated for Interior & Exterior use
- Product rated for Interior use only
- † May be suitable for Exterior Floors
- ⊘ Applications & ANSI Technical Specifications do not apply
- * Special Order only



The mesh backing on this tile has minimal glue to allow greater thinset coverage. To prevent the mosaics from falling off the mesh, keep the sheets as dry as possible while cutting. If necessary, place a light clear adhesive tape over the sheet while cutting to avert water. Install full sheets as much as possible. Fully embed 1/3 thickness of the tiles into the premium modified thinset.

IMPORTANT: Installation Instructions - We recommend wet cutting or the score and snap method during the installation process. Improper installation techniques could expose installer to inhalation of harmful silica dust Do not dry cut product using power tools during the installation process. Using dry cutting methods could present a risk of acute lung injury. If adequate ventilation cannot be achieved, wear a mask or respirator. For more information, see the SDS at www.bedrosians.com/en/installation-care-maintenance/.

Merchandising materials and samples are for general reference only and representative of a product's potential characteristics. Tile is subject to variation in color/shade, size, texture, and finish. Field, mosaic and trim tile may not match exactly. Blend tiles from different boxes to achieve consistent shade distribution. Installer and end user must conduct a dry mock layout under proper lighting conditions to inspect the product. Installation constitutes acceptance of the product. Reference the TCNA, ANSI, Manufacturer's specifications, and Bedrosians Care & Maintenance Guide. Improper installation, application, use, care and maintenance voids warranty. We reserve the right to make product changes without notice. Please visit bedrosians.com for current product information.

